

NEW PRODUCTS 2018 — 2019

**EFFICIENT SOLUTIONS**

**PRICE LIST**



# MULTI SPLIT AND FREE MULTI SYSTEM



## Panasonic offers widest range in Multi split systems

2 types of Multi split range from 3,5 to 9,0kW for 5 indoor units with one outdoor unit.

| Free Multi Z  | New Multi TZ Wall with R32 refrigerant                             |
|---|--|
| Full flexibility up to 9,0kW and up to 5 ports with wide range of indoor units including high performance Etherea indoor units, reaching up to A+++ / A++ | From 4,1 to 5,2kW for TZ Wall Compact Style unit, reaches A++ / A+ |

| Line up  | Refrigerant | Capacities            | Indoor unit ports | Efficiency up to | Indoor units |               |               |          |      |
|----------|-------------|-----------------------|-------------------|------------------|--------------|---------------|---------------|----------|------|
|          |             |                       |                   |                  | Etherea      | Compact Style | Floor Console | Cassette | Duct |
| Multi Z  | R32         | 8 units (3,5 ~ 9,0kW) | 2~5               | A+++ / A++       | Yes          | Yes           | Yes           | Yes      | Yes  |
| Multi TZ | R32         | 3 units (4,1 ~ 5,2kW) | 2~3               | A++ / A+         |              | Yes           |               |          |      |

## Multi split systems

| Day & Night   | Simultaneous  |
|---|---|
| Ideal for 2 day and night areas. Simultaneous use possible. | When indoor units are most time working at same time. |

**UP TO 5  
INDOOR UNITS  
WITH A SINGLE  
OUTDOOR UNIT**



**Why a Multi Split is better than several separate split units**

**Up to 5 indoor units with a single outdoor unit.**

- Just one compact outdoor unit
- Increased comfort in the house since every room has its own indoor unit for heating

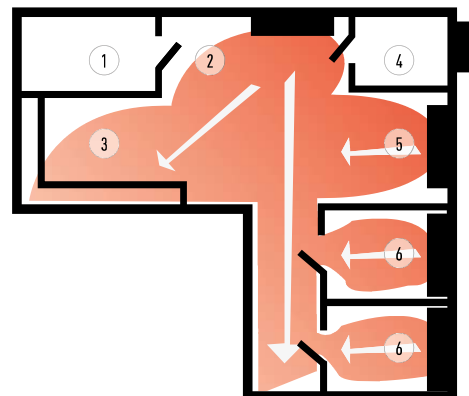
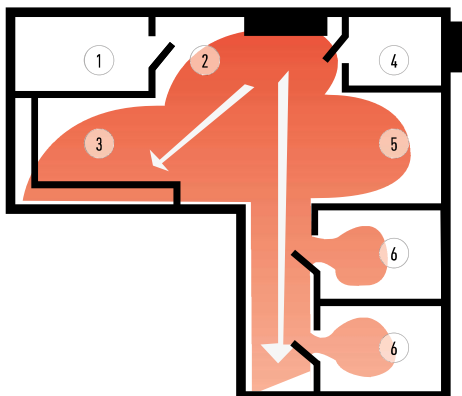
- Much more powerful than a single split
- More efficient since the units are always operating at full capacity
- You can connect all types of indoor units, such as wall types and consoles, depending on what suits your house best

**Solution with single split.**

One indoor unit is connected to one outdoor unit. The indoor unit is placed in the main hallway and heats the entire house. Certain rooms may not be perfectly heated, which causes inadequate comfort.

**Solution with Multi Split.**

With one outdoor unit, you can connect up to five indoor units. There is one indoor unit per room or area. It gives an extreme increase in comfort levels. On the roof, there is only one outdoor unit.



1. Laundry room  
2. Entrance  
3. Kitchen/dining area  
4. Bathroom  
5. Living room  
6. Bedroom

R32

Free Multi System Z



Outdoor unit Free Multi System Z • R32 GAS

| System Capacity (Min – Max Indoor Cooling Capacity Nominal) |                     |                         | 3,2 to 6,0kW     | 3,2 to 6,0kW     | 3,2 to 7,7kW     | 4,5 to 9,5kW    | 4,5 to 11,2kW    | 4,5 to 11,5kW    | 4,5 to 14,7kW    | 4,5 to 18,3kW     |
|---|---------------------|-------------------------|------------------|------------------|------------------|-----------------|------------------|------------------|------------------|-------------------|
| Unit  |                     |                         | CU-Z235TBE       | CU-Z241TBE       | CU-Z250TBE       | CU-3Z52TBE      | CU-3Z68TBE       | CU-4Z68TBE       | CU-4Z80TBE       | CU-5Z90TBE        |
| Cooling capacity  | Nominal (Min - Max) | kW                      | 3,50(1,50-4,50)  | 4,10(1,50-5,20)  | 5,00(1,50-5,40)  | 5,20(1,80-7,30) | 6,80(1,90-8,00)  | 6,80(1,90-8,80)  | 8,00(3,00-9,20)  | 9,00(2,90-11,50)  |
| EER <sup>1)</sup>   | Nominal (Min - Max) | W/W                     | 4,86(6,00-4,09)A | 4,56(6,00-3,80)A | 4,24(6,00-3,62)A | 4,77 A          | 3,66(7,04-3,38)A | 4,39(5,59-3,56)A | 4,04(5,66-3,21)A | 4,09(5,27-2,98)A  |
| SEER <sup>2)</sup>  |                     | W/W                     | 8,50 A+++        | 8,50 A+++        | 8,50 A+++        | 8,50 A+++       | 8,00 A+++        | 8,00 A+++        | 7,90 A+++        | 8,50 A+++         |
| Pdesign (cooling)   |                     | kW                      | 3,5              | 4,1              | 5,0              | 5,2             | 6,8              | 6,8              | 8,0              | 9,0               |
| Input power cooling   | Nominal (Min - Max) | kW                      | 0,72(0,25-1,10)  | 0,90(0,25-1,37)  | 1,18(0,25-1,49)  | 1,09(0,36-2,18) | 1,86(0,27-2,37)  | 1,55(0,34-2,47)  | 1,98(0,53-2,87)  | 2,20(0,55-3,86)   |
| Annual energy consumption (ErP) <sup>3)</sup>               |                     | kWh/a                   | 144              | 169              | 206              | 214             | 298              | 298              | 990              | 1100              |
| Heating capacity  | Nominal (Min - Max) | kW                      | 4,20(1,10-5,60)  | 4,60(1,10-7,00)  | 5,60(1,10-7,20)  | 6,80(1,60-8,30) | 8,50(3,30-10,40) | 8,50(3,00-10,60) | 9,40(4,20-10,60) | 10,40(3,40-14,50) |
| Heating capacity at -7°C                                    |                     | kW                      | —                | —                | —                | 3,95            | 4,45             | 4,45             | —                | —                 |
| COP <sup>1)</sup>   | Nominal (Min - Max) | W/W                     | 4,88(5,24-4,18)A | 4,79(5,24-3,91)A | 4,63(5,24-4,00)A | 4,72 A          | 3,95(5,32-3,64)A | 4,47(5,17-3,96)A | 4,63(6,00-3,46)A | 4,84(6,42-3,42)A  |
| SCOP <sup>2)</sup>  |                     | W/W                     | 4,60 A+++        | 4,60 A+++        | 4,60 A+++        | 4,20 A++        | 4,20 A++         | 4,20 A++         | 4,70 A+++        | 4,68 A+++         |
| Pdesign at -10°C  |                     | kW                      | 3,2              | 3,5              | 4,2              | 5,0             | 5,2              | 5,8              | 6,8              | 8,5               |
| Input power heating   | Nominal (Min - Max) | kW                      | 0,86(0,21-1,34)  | 0,96(0,21-1,79)  | 1,21(0,21-1,80)  | 1,47(3,20-2,17) | 2,15(0,62-2,86)  | 1,90(0,58-2,68)  | 2,03(0,70-3,06)  | 2,15(0,53-4,24)   |
| Annual energy consumption (ErP) <sup>3)</sup>               |                     | kWh/a                   | 974              | 1065             | 1278             | 1667            | 1733             | 1933             | 2026             | 2543              |
| Current   | Cool / Heat         | A                       | 3,35/4,00        | 4,15/4,45        | 5,35/5,50        | 5,00/6,70       | 8,40/9,70        | 7,00/8,60        | 9,50/9,50        | 10,50/10,10       |
| Power source  |                     | V                       | 230              | 230              | 230              | 230             | 230              | 230              | 230              | 230               |
| Recommended fuse  |                     | A                       | 16               | 16               | 16               | 16              | 16               | 20               | 20               | 25                |
| Recommended power cable section                             |                     | mm <sup>2</sup>         | 2,5              | 2,5              | 2,5              | 2,5             | 2,5              | 2,5              | 2,5              | 3,5               |
| Sound pressure <sup>4)</sup>                                | Cool / Heat (Hi)    | dB(A)                   | 48/50            | 48/50            | 50/52            | 47/48           | 51/52            | 49/50            | 51/52            | 53/54             |
| Dimension <sup>5)</sup>                                     | H x W x D           | mm                      | 619 x 824 x 299  | 619 x 824 x 299  | 619 x 824 x 299  | 795 x 875 x 320 | 795 x 875 x 320  | 795 x 875 x 320  | 999 x 940 x 340  | 999 x 940 x 340   |
| Net weight  |                     | kg                      | 39               | 39               | 39               | 71              | 71               | 72               | 80               | 81                |
| Piping connections  | Liquid pipe         | Inch (mm)               | 1/4(6,35)        | 1/4(6,35)        | 1/4(6,35)        | 1/4(6,35)       | 1/4(6,35)        | 1/4(6,35)        | 1/4(6,35)        | 1/4(6,35)         |
|   | Gas pipe            | Inch (mm)               | 3/8(9,52)        | 3/8(9,52)        | 3/8(9,52)        | 3/8(9,52)       | 3/8(9,52)        | 3/8(9,52)        | 3/8(9,52)        | 3/8(9,52)         |
| Pipe length range total <sup>6)</sup>                       |                     | m                       | 6-30             | 6-30             | 6-30             | 6-50            | 6-60             | 6-60             | 6-70             | 6-80              |
| Pipe length range to one unit                               |                     | m                       | 3-20             | 3-20             | 3-20             | 3-25            | 3-25             | 3-25             | 3-25             | 3-25              |
| Elevation difference (in/out)                               |                     | m                       | 10               | 10               | 10               | 15              | 15               | 15               | 15               | 15                |
| Pipe length for additional gas                              |                     | m                       | 20               | 20               | 20               | 30              | 30               | 30               | 45               | 45                |
| Additional gas amount                                       |                     | g/m                     | 15               | 15               | 15               | 20              | 20               | 20               | 20               | 20                |
| Refrigerant (R32)   |                     | kg/TCO <sub>2</sub> Eq. | 1,12/0,756       | 1,12/0,756       | 1,12/0,756       | 2,10/1,418      | 2,10/1,418       | 2,10/1,418       | 2,72/1,836       | 2,72/1,836        |
| Operating range   | Cool Min ~ Max      | °C                      | -10 ~ +46        | -10 ~ +46        | -10 ~ +46        | -10 ~ +46       | -10 ~ +46        | -10 ~ +46        | -10 ~ +46        | -10 ~ +46         |
|   | Heat Min ~ Max      | °C                      | -15 ~ +24        | -15 ~ +24        | -15 ~ +24        | -15 ~ +24       | -15 ~ +24        | -15 ~ +24        | -15 ~ +24        | -15 ~ +24         |
| Outdoor unit Price  |                     | €                       |                  |                  |                  |                 |                  |                  |                  |                   |

1) EER and COP classification is at 230V in accordance with EU directive 2002/31/EC. 2) Energy Label Scale from A+++ to G. 3) The annual energy consumption is calculated in accordance with the ErP directive. 4) The sound pressure of the units shows the value measured at a position 1m in front of the main body and 0,8m below the unit. The sound pressure is measured in accordance with Eurovent 6/C/006-97 specification. 5) Add 70 or 95mm for piping port. 6) Minimum piping length is 3 meters per indoor unit. Minimum quantity of connection: 2 indoor units.

Possible outdoor / indoor units combinations • R32 GAS

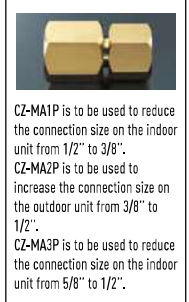
|                                       | Etherea Silver          | Etherea Pure White Matt | Wall Mounted TZ Compact Style | Floor Console*          | 4 Way 60x60 Cassette    | Low Static Pressure Hide Away |
|---------------------------------------|-------------------------|-------------------------|-------------------------------|-------------------------|-------------------------|-------------------------------|
|                                       | 16 20 25 35 42 50 60 71 | 16 20 25 35 42 50 60 71 | 16 20 25 35 42 50 60 71       | 16 20 25 35 42 50 60 71 | 16 20 25 35 42 50 60 71 | 16 20 25 35 42 50 60 71       |
| CU-Z235TBE // 3,2 - 6,0kW // 2 Rooms  | ✓ ✓ ✓                   | ✓ ✓ ✓ ✓                 | ✓ ✓ ✓ ✓                       | ✓ ✓ ✓                   | ✓ ✓ ✓                   | ✓ ✓ ✓                         |
| CU-Z241TBE // 3,2 - 6,0kW // 2 Rooms  | ✓ ✓ ✓                   | ✓ ✓ ✓ ✓                 | ✓ ✓ ✓ ✓                       | ✓ ✓ ✓                   | ✓ ✓ ✓                   | ✓ ✓ ✓                         |
| CU-Z250TBE // 3,2 - 7,7kW // 2 Rooms  | ✓ ✓ ✓ ✓ ✓               | ✓ ✓ ✓ ✓ ✓               | ✓ ✓ ✓ ✓ ✓                     | ✓ ✓ ✓ ✓                 | ✓ ✓ ✓ ✓                 | ✓ ✓ ✓ ✓                       |
| CU-3Z52TBE // 4,5 - 9,5kW // 3 Rooms  | ✓ ✓ ✓ ✓ ✓               | ✓ ✓ ✓ ✓ ✓               | ✓ ✓ ✓ ✓ ✓                     |                         | ✓ ✓ ✓ ✓                 | ✓ ✓ ✓ ✓                       |
| CU-3Z68TBE // 4,5 - 11,2kW // 3 Rooms | ✓ ✓ ✓ ✓ ✓               | ✓ ✓ ✓ ✓ ✓               | ✓ ✓ ✓ ✓ ✓                     |                         | ✓ ✓ ✓ ✓                 | ✓ ✓ ✓ ✓                       |
| CU-4Z68TBE // 4,5 - 11,5kW // 4 Rooms | ✓ ✓ ✓ ✓ ✓               | ✓ ✓ ✓ ✓ ✓               | ✓ ✓ ✓ ✓ ✓                     |                         | ✓ ✓ ✓ ✓                 | ✓ ✓ ✓ ✓                       |
| CU-4Z80TBE // 4,5 - 14,7kW // 4 Rooms | ✓ ✓ ✓ ✓ ✓               | ✓ ✓ ✓ ✓ ✓               | ✓ ✓ ✓ ✓ ✓                     |                         | ✓ ✓ ✓ ✓                 | ✓ ✓ ✓ ✓                       |
| CU-5Z90TBE // 4,5 - 18,3kW // 5 Rooms | ✓ ✓ ✓ ✓ ✓               | ✓ ✓ ✓ ✓ ✓               | ✓ ✓ ✓ ✓ ✓                     |                         | ✓ ✓ ✓ ✓                 | ✓ ✓ ✓ ✓                       |

1) A CZ-MA1P pipe reducer is needed on the 42 and 50, a CZ-MA2P pipe expander is needed on the 60 and CZ-MA3P pipe reducer on the 71. \* Compatible only with 2 ports outdoor CU-Z235TBE / CU-Z241TBE / CU-Z250TBE.

Outdoor Multi combination model

|  | Model  | Price €               |
|--|--|-----------------------|
| CS-MZ16TKE / CS-MTZ16TKE<br>CS-XZ20TKEW / CS-Z20TKEW / CS-TZ20TKEW-1 / CS-MZ20UFEA / CS-MZ20UB4EA / CS-MZ20UD3EA<br>CS-XZ25TKEW / CS-Z25TKEW / CS-TZ25TKEW-1 / CS-Z25UFEAW / CS-Z25UB4EAW / CS-Z25UD3EAW<br>CS-XZ35TKEW / CS-Z35TKEW / CS-TZ35TKEW-1 / CS-Z35UFEAW / CS-Z35UB4EAW / CS-Z35UD3EAW | CU-Z235TBE / CU-Z241TBE /<br>CU-Z250TBE / CU-3Z52TBE /<br>CU-3Z68TBE / CU-4Z68TBE /<br>CU-4Z80TBE / CU-5Z90TBE | —                     |
| CS-Z42TKEW / CS-TZ42TKEW-1<br>CS-XZ50TKEW / CS-Z50TKEW / CS-TZ50TKEW / CS-Z50UFEAW / CS-Z50UB4EAW / CS-Z50UD3EAW   | CU-Z250TBE / CU-3Z52TBE /<br>CU-3Z68TBE / CU-4Z68TBE /<br>CU-4Z80TBE / CU-5Z90TBE                              | CZ-MA1P               |
| CS-TZ60TKEW / CS-Z60UB4EAW / CS-Z60UD3EAW  | CU-3Z68TBE / CU-4Z68TBE /<br>CU-4Z80TBE / CU-5Z90TBE   | CZ-MA2P               |
| CS-Z71TKEW / CS-TZ71TKEW   | CU-4Z80TBE / CU-5Z90TBE  | CZ-MA2P /<br>CZ-MA3P* |

\* For CZ-MA3P necessary to use adaptor CZ-MA2P too.



CZ-MA1P is to be used to reduce the connection size on the indoor unit from 1/2" to 3/8". CZ-MA2P is to be used to increase the connection size on the outdoor unit from 3/8" to 1/2". CZ-MA3P is to be used to reduce the connection size on the indoor unit from 5/8" to 1/2".

Free Multi System Z

R32



IF DESIGN AWARD 2017: Etherea White awarded with the prestigious IF Design Award 2017. INTERNET CONTROL: Optional.



| Wall Mounted Etherea | Indoor unit Silver | Indoor unit Pure White Matt | Cooling capacity<br>kW / kCal/h | Heating capacity<br>kW / kCal/h | Connection<br>mm | Sound pressure <sup>1</sup> |  | Dimension / Net weight |  | Piping connections       | Silver Price<br>€ | White Price<br>€ |
|----------------------|--------------------|-----------------------------|---------------------------------|---------------------------------|------------------|-----------------------------|--|------------------------|--|--------------------------|-------------------|------------------|
|                      |                    |                             |                                 |                                 |                  | Cool — Heat (Hi/L0/S-Lo)    |  | HxWxD                  |  | Liquid / Gas pipe        |                   |                  |
|                      |                    |                             |                                 |                                 |                  | dB(A)                       |  | mm / kg                |  | Inch (mm)                |                   |                  |
| 1,6kW                | —                  | CS-MZ16TKE                  | 1,60/1380                       | 2,60/2240                       | 4 x 1,5          | 38/26/21 — 39/27/21         |  | 295 x 919 x 194/9      |  | 1/4 (6,35) / 3/8 (9,52)  | —                 | —                |
| 2,0kW                | CS-XZ20TKEW        | CS-Z20TKEW                  | 2,00/1720                       | 3,20/2750                       | 4 x 1,5          | 39/26/21 — 40/27/21         |  | 295 x 919 x 194/9      |  | 1/4 (6,35) / 3/8 (9,52)  | —                 | —                |
| 2,5kW                | CS-XZ25TKEW        | CS-Z25TKEW                  | 2,50/2150                       | 3,60/3100                       | 4 x 1,5          | 41/27/21 — 43/29/21         |  | 295 x 919 x 194/10     |  | 1/4 (6,35) / 3/8 (9,52)  | —                 | —                |
| 3,5kW                | CS-XZ35TKEW        | CS-Z35TKEW                  | 3,20/2750                       | 4,50/3870                       | 4 x 1,5          | 44/30/21 — 45/35/21         |  | 295 x 919 x 194/10     |  | 1/4 (6,35) / 3/8 (9,52)  | —                 | —                |
| 4,2kW                | —                  | CS-Z42TKEW                  | 4,00/3440                       | 5,60/4820                       | 4 x 1,5          | 44/33/27 — 45/37/31         |  | 295 x 919 x 194/10     |  | 1/4 (6,35) / 1/2 (12,70) | —                 | —                |
| 5,0kW                | CS-XZ50TKEW        | CS-Z50TKEW                  | 5,00/4300                       | 6,80/5850                       | 4 x 1,5          | 44/39/32 — 46/39/32         |  | 302 x 1120 x 236/12    |  | 1/4 (6,35) / 1/2 (12,70) | —                 | —                |
| 7,1kW                | —                  | CS-Z71TKEW                  | 7,10/6110                       | 8,60/7395                       | —                | 49/40/32 — 49/40/32         |  | 302 x 1120 x 236/13    |  | 1/4 (6,35) / 5/8 (15,88) | —                 | —                |



INTERNET CONTROL: Optional.



| Wall Mounted TZ Compact Style | Indoor unit   | Cooling capacity<br>kW / kCal/h | Heating capacity<br>kW / kCal/h | Connection<br>mm | Sound pressure <sup>1</sup> |  | Dimension / Net weight |  | Piping connections       | Price<br>€ |
|-------------------------------|---------------|---------------------------------|---------------------------------|------------------|-----------------------------|--|------------------------|--|--------------------------|------------|
|                               |               |                                 |                                 |                  | Cool — Heat (Hi/L0/S-Lo)    |  | HxWxD                  |  | Liquid / Gas pipe        |            |
|                               |               |                                 |                                 |                  | dB(A)                       |  | mm / kg                |  | Inch (mm)                |            |
| 1,6kW                         | CS-MTZ16TKE   | 1,60/1380                       | 2,60/2240                       | 4 x 1,5          | 38/27/22 — 39/28/24         |  | 290 x 799 x 197/8      |  | 1/4 (6,35) / 3/8 (9,52)  | —          |
| 2,0kW                         | CS-TZ20TKEW-1 | 2,00/1720                       | 3,20/2750                       | 4 x 1,5          | 39/27/22 — 40/28/24         |  | 290 x 799 x 197/8      |  | 1/4 (6,35) / 3/8 (9,52)  | —          |
| 2,5kW                         | CS-TZ25TKEW-1 | 2,50/2150                       | 3,60/3100                       | 4 x 1,5          | 42/28/22 — 42/29/24         |  | 290 x 799 x 197/8      |  | 1/4 (6,35) / 3/8 (9,52)  | —          |
| 3,5kW <sup>2</sup>            | CS-TZ35TKEW-1 | 3,50/3010                       | 4,50/3870                       | 4 x 1,5          | 44/32/22 — 44/35/24         |  | 290 x 799 x 197/8      |  | 1/4 (6,35) / 3/8 (9,52)  | —          |
| 4,2kW                         | CS-TZ42TKEW-1 | 4,20/3610                       | 5,00/4300                       | 4 x 1,5          | 44/33/31 — 46/37/30         |  | 290 x 799 x 197/8      |  | 1/4 (6,35) / 1/2 (12,70) | —          |
| 5,0kW                         | CS-TZ50TKEW   | 5,00/4300                       | 5,30/4558                       | 4 x 1,5          | 44/39/36 — 46/39/36         |  | 302 x 1102 x 244/12    |  | 1/4 (6,35) / 1/2 (12,70) | —          |
| 6,0kW                         | CS-TZ60TKEW   | 6,00/5160                       | 8,50/7310                       | 4 x 1,5          | 44/39/36 — 47/39/36         |  | 302 x 1102 x 244/12    |  | 1/4 (6,35) / 5/8 (15,88) | —          |
| 7,1kW                         | CS-TZ71TKEW   | 7,10/6110                       | 8,90/7654                       | —                | 49/40/37 — 49/40/37         |  | 302 x 1102 x 244/13    |  | 1/4 (6,35) / 5/8 (15,88) | —          |



SUPER QUIET: For CS-Z25UFEAW and CS-Z35UFEAW. INTERNET CONTROL: Optional.



| Floor Console 3* * | Indoor      | Cooling capacity<br>kW / kCal/h | Heating capacity<br>kW / kCal/h | Connection<br>mm | Sound pressure <sup>1</sup> |  | Dimension / Net weight |  | Piping connections       | Price<br>€ |
|--------------------|-------------|---------------------------------|---------------------------------|------------------|-----------------------------|--|------------------------|--|--------------------------|------------|
|                    |             |                                 |                                 |                  | Cool — Heat (Hi/L0/S-Lo)    |  | HxWxD                  |  | Liquid / Gas pipe        |            |
|                    |             |                                 |                                 |                  | dB(A)                       |  | mm / kg                |  | Inch (mm)                |            |
| 2,0kW              | CS-MZ20UFEA | 2,00/1720                       | 3,20/2750                       | 4 x 1,5          | —                           |  | 600 x 750 x 207/13     |  | —                        | —          |
| 2,8kW              | CS-Z25UFEAW | 2,80/2410                       | 3,60/3100                       | 4 x 1,5          | 38/25/20 — 38/25/19         |  | 600 x 750 x 207/13     |  | 1/4 (6,35) / 3/8 (9,52)  | —          |
| 3,5kW <sup>2</sup> | CS-Z35UFEAW | 3,50/3010                       | 4,50/3870                       | 4 x 1,5          | 39/26/20 — 39/26/19         |  | 600 x 750 x 207/13     |  | 1/4 (6,35) / 3/8 (9,52)  | —          |
| 5,0kW              | CS-Z50UFEAW | 5,00/4300                       | 5,30/4558                       | 4 x 1,5          | 44/31/27 — 46/33/29         |  | 600 x 750 x 207/13     |  | 1/4 (6,35) / 1/2 (12,70) | —          |



NEW CZ-S120EW RAL9010 panel for 4 Way 60x60 Cassette (sold separately).

SUPER QUIET: For CS-Z25U4EAW. INTERNET CONTROL READY and EASY CONTROL by BMS: Optional.



| 4 Way 60x60 Cassette* | Indoor / Panel           | Cooling capacity<br>kW / kCal/h | Heating capacity<br>kW / kCal/h | Connection<br>mm | Sound pressure <sup>1</sup> |  | Dimension / Net weight        |  | Piping connections       | Indoor Price<br>€ | Panel Price<br>€ |
|-----------------------|--------------------------|---------------------------------|---------------------------------|------------------|-----------------------------|--|-------------------------------|--|--------------------------|-------------------|------------------|
|                       |                          |                                 |                                 |                  | Cool — Heat (Hi/L0/S-Lo)    |  | Indoor HxWxD Panel HxWxD      |  | Liquid / Gas pipe        |                   |                  |
|                       |                          |                                 |                                 |                  | dB(A)                       |  | mm / kg mm / kg               |  | Inch (mm)                |                   |                  |
| 2,0kW                 | CS-MZ20UB4EA / CZ-BT20EW | 2,00/1720                       | 3,20/2750                       | 4 x 1,5          | —                           |  | 260x575x575/18 51x700x700/2,5 |  | —                        | —                 |                  |
| 2,5kW                 | CS-Z25UB4EAW / CZ-BT20EW | 2,80/2410                       | 3,60/3100                       | 4 x 1,5 to 2,5   | 34/25/22 — 35/28/25         |  | 260x575x575/18 51x700x700/2,5 |  | 1/4 (6,35) / 3/8 (9,52)  | —                 |                  |
| 3,5kW <sup>2</sup>    | CS-Z35UB4EAW / CZ-BT20EW | 3,50/3010                       | 4,50/3870                       | 4 x 1,5 to 2,5   | 34/26/23 — 35/28/25         |  | 260x575x575/18 51x700x700/2,5 |  | 1/4 (6,35) / 3/8 (9,52)  | —                 |                  |
| 5,0kW                 | CS-Z50UB4EAW / CZ-BT20EW | 5,00/4300                       | 5,30/4558                       | 4 x 1,5 to 2,5   | 37/28/25 — 38/29/26         |  | 260x575x575/18 51x700x700/2,5 |  | 1/4 (6,35) / 1/2 (12,70) | —                 |                  |
| 6,0kW                 | CS-Z60UB4EAW / CZ-BT20EW | 6,00/5160                       | 8,50/7310                       | 4 x 1,5 to 2,5   | 42/32/29 — 43/32/29         |  | 260x575x575/18 51x700x700/2,5 |  | 1/4 (6,35) / 1/2 (12,70) | —                 |                  |



INTERNET CONTROL READY and EASY CONTROL by BMS: Optional.



| Low Static Pressure Hide Away* | Indoor       | Cooling capacity<br>kW / kCal/h | Heating capacity<br>kW / kCal/h | Connection<br>mm | Sound pressure <sup>1</sup> |  | Dimension / Net weight |  | Piping connections       | Price<br>€ |
|--------------------------------|--------------|---------------------------------|---------------------------------|------------------|-----------------------------|--|------------------------|--|--------------------------|------------|
|                                |              |                                 |                                 |                  | Cool — Heat (Hi/L0/S-Lo)    |  | HxWxD                  |  | Liquid / Gas pipe        |            |
|                                |              |                                 |                                 |                  | dB(A)                       |  | mm / kg                |  | Inch (mm)                |            |
| 2,0kW                          | CS-MZ20UD3EA | 2,00/1720                       | 3,20/2750                       | 4 x 1,5          | —                           |  | 200 x 750 x 640/19     |  | —                        | —          |
| 2,5kW                          | CS-Z25UD3EAW | 2,50/2150                       | 3,60/3100                       | 4 x 1,5 to 2,5   | 33/27/24 — 35/27/24         |  | 200 x 750 x 640/19     |  | 1/4 (6,35) / 3/8 (9,52)  | —          |
| 3,5kW <sup>2</sup>             | CS-Z35UD3EAW | 3,50/3010                       | 4,50/3870                       | 4 x 1,5 to 2,5   | 33/27/24 — 35/27/24         |  | 200 x 750 x 640/19     |  | 1/4 (6,35) / 3/8 (9,52)  | —          |
| 5,0kW                          | CS-Z50UD3EAW | 5,00/4300                       | 5,30/4558                       | 4 x 1,5 to 2,5   | 39/29/26 — 39/30/27         |  | 200 x 750 x 640/19     |  | 1/4 (6,35) / 1/2 (12,70) | —          |
| 6,0kW                          | CS-Z60UD3EAW | 6,00/5160                       | 8,50/7310                       | 4 x 1,5 to 2,5   | 41/30/27 — 41/32/29         |  | 200 x 750 x 640/19     |  | 1/4 (6,35) / 1/2 (12,70) | —          |

1) The sound pressure of the units shows the value measured of a position 1m in front of the main body. The sound pressure is measured in accordance with Eurovent 6/C/006-97 specification. 2) The heating capacity is 4,20kW connected to a CU-Z235TBE. 3) Compatible only with 2 ports Outdoor CU-Z235TBE / CU-Z241TBE / CU-Z250TBE. \* Tentative data.

R32

Multi Wall TZ



**Outdoor unit Multi Wall TZ • R32 GAS**

| System Capacity                               |                     |                           | 3,2 ~ 6,0kW          | 3,2 ~ 7,7kW          | 4,5 ~ 9,5kW          |
|---|---------------------|---------------------------|----------------------|----------------------|----------------------|
| Unit  |                     |                           | CU-2TZ41TBE          | CU-2TZ50TBE          | CU-3TZ52TBE          |
| Cooling capacity                              | Nominal (Min - Max) | kW                        | 4,10 (1,50 - 4,70)   | 5,00 (1,50 - 5,40)   | 5,20 (1,80 - 6,60)   |
| EER <sup>1)</sup>                             | Nominal (Min - Max) | W/W                       | 4,14 (5,56 - 3,41) A | 3,85 (5,56 - 3,33) A | 4,52 (3,67 - 5,00) A |
| <b>SEER <sup>2)</sup></b>                     | <b>W/W</b>          |                           | <b>7,10 A++</b>      | <b>7,00 A++</b>      | <b>7,60 A++</b>      |
| Pdesign (cooling)                             |                     | kW                        | 4,10                 | 5,00                 | 5,20                 |
| Input power cooling                           | Nominal (Min - Max) | kW                        | 0,99 (0,22 - 1,38)   | 1,30 (0,27 - 1,62)   | 1,15 (0,36 - 1,80)   |
| Annual energy consumption (ErP) <sup>3)</sup> |                     | kWh/a                     | 202                  | 250                  | 239                  |
| Heating capacity                              | Nominal (Min - Max) | kW                        | 4,40 (1,10 - 6,30)   | 5,70 (1,10 - 6,40)   | 6,80 (1,60 - 7,50)   |
| Heating capacity at -7°C                      |                     | kW                        | —                    | —                    | —                    |
| COP <sup>1)</sup>                             | Nominal (Min - Max) | W/W                       | 4,44 (5,00 - 3,54) A | 4,35 (5,00 - 3,62) A | 4,28 (3,87 - 5,00) A |
| <b>SCOP <sup>2)</sup></b>                     | <b>W/W</b>          |                           | <b>4,30 A+</b>       | <b>4,20 A+</b>       | <b>4,20 A+</b>       |
| Pdesign at -10°C                              |                     | kW                        | 3,50                 | 4,50                 | 5,00                 |
| Input power heating                           | Nominal (Min - Max) | kW                        | 0,99 (0,22 - 1,78)   | 1,31 (0,22 - 1,77)   | 1,59 (0,32 - 1,94)   |
| Annual energy consumption (ErP) <sup>3)</sup> |                     | kWh/a                     | 1139                 | 1500                 | 1667                 |
| Current                                       | Cool / Heat         | A                         | 4,60 / 4,60          | 6,00 / 6,00          | 5,30 / 7,30          |
| Power source                                  |                     | V                         | 230                  | 230                  | 230                  |
| Sound pressure <sup>4)</sup>                  | Cool / Heat (Hi)    | dB(A)                     | 48 / 50              | 50 / 52              | 48 / 48              |
| Dimension <sup>5)</sup>                       | H x W x D           | mm                        | 542 x 780 x 289      | 542 x 780 x 289      | 795 x 875 x 320      |
| Net weight                                    |                     | kg                        | 35                   | 35                   | 71                   |
| Piping connections                            | Liquid pipe         | Inch (mm)                 | 1/4 (6,35)           | 1/4 (6,35)           | 1/4 (6,35)           |
|   | Gas pipe            | Inch (mm)                 | 3/8 (9,52)           | 3/8 (9,52)           | 3/8 (9,52)           |
| Pipe length range total                       |                     | m                         | 6 ~ 30               | 6 ~ 30               | 6 ~ 50               |
| Pipe length range to one unit                 |                     | m                         | 3 ~ 20               | 3 ~ 20               | 3 ~ 25               |
| Elevation difference (in/out)                 |                     | m                         | 10                   | 10                   | 15                   |
| Pipe length for additional gas                |                     | m                         | 20                   | 20                   | 30                   |
| Additional gas amount                         |                     | g/m                       | 15                   | 15                   | 20                   |
| Refrigerant (R32)                             |                     | kg / TCO <sub>2</sub> Eq. | 0,9 / 0,6075         | 0,9 / 0,6075         | 2,1 / 1,4175         |
| Operating range                               | Cool Min ~ Max      | °C                        | -10 ~ +46            | -10 ~ +46            | -10 ~ +46            |
|   | Heat Min ~ Max      | °C                        | -15 ~ +24            | -15 ~ +24            | -15 ~ +24            |
| <b>Outdoor unit Price</b>                     |                     | €                         |                      |                      |                      |

1) EER and COP classification is at 230V in accordance with EU directive 2002/31/EC. 2) Energy Label Scale from A+++ to G. 3) The annual energy consumption is calculated in accordance with the ErP directive. 4) The sound pressure of the units shows the value measured of a position 1m in front of the main body and 0,8m below the unit. The sound pressure is measured in accordance with Eurovent 6/C/006-97 specification. 5) Add 70 or 95mm for piping port. Minimum quantity of connection: 2 indoor units.

**Possible outdoor / indoor units combinations • R32 GAS**

**Wall Mounted TZ Compact Style**



|                                       | 16 | 20 | 25 | 35 | 42 | 50 |
|---------------------------------------|----|----|----|----|----|----|
| CU-2TZ41TBE // 3,2 ~ 6,0kW // 2 Rooms | ✓  | ✓  | ✓  | ✓  |    |    |
| CU-2TZ50TBE // 3,2 ~ 7,7kW // 2 Rooms | ✓  | ✓  | ✓  | ✓  | ✓  | ✓  |
| CU-3TZ52TBE // 4,5 ~ 9,5kW // 3 Rooms | ✓  | ✓  | ✓  | ✓  | ✓  | ✓  |



| Wall Mounted TZ Compact Style | Indoor unit   | Cooling capacity | Heating capacity | Connection | Sound pressure <sup>1)</sup> | Dimension / Net weight | Piping connections       | Price |
|-------------------------------|---------------|------------------|------------------|------------|------------------------------|------------------------|--------------------------|-------|
|                               |               |                  |                  |            | Cool — Heat (Hi/Lo/S-Lo)     | H x W x D              | Liquid / Gas pipe        |       |
|                               |               | kW / kCal/h      | kW / kCal/h      | mm         | dB(A)                        | mm / kg                | Inch (mm)                | €     |
| 1,6kW                         | CS-MTZ16TKE   | 1,60/1380        | 2,60/2240        | 4 x 1,5    | 38/27/22 — 39/28/24          | 290 x 799 x 197/8      | 1/4 (6,35) / 3/8 (9,52)  |       |
| 2,0kW                         | CS-TZ20TKEW-1 | 2,00/1720        | 3,20/2750        | 4 x 1,5    | 39/27/22 — 40/28/24          | 290 x 799 x 197/8      | 1/4 (6,35) / 3/8 (9,52)  |       |
| 2,5kW                         | CS-TZ25TKEW-1 | 2,50/2150        | 3,60/3100        | 4 x 1,5    | 42/28/22 — 42/29/24          | 290 x 799 x 197/8      | 1/4 (6,35) / 3/8 (9,52)  |       |
| 3,5kW                         | CS-TZ35TKEW-1 | 3,50/3010        | 4,50/3870        | 4 x 1,5    | 44/32/22 — 44/35/24          | 290 x 799 x 197/8      | 1/4 (6,35) / 3/8 (9,52)  |       |
| 4,2kW                         | CS-TZ42TKEW-1 | 4,20/3610        | 5,00/4300        | 4 x 1,5    | 44/33/31 — 46/37/30          | 290 x 799 x 197/8      | 1/4 (6,35) / 1/2 (12,70) |       |
| 5,0kW                         | CS-TZ50TKEW   | 5,00/4300        | 5,30/4558        | 4 x 1,5    | 44/39/36 — 46/39/36          | 302 x 1102 x 244/12    | 1/4 (6,35) / 1/2 (12,70) |       |

1) The sound pressure of the units shows the value measured of a position 1m in front of the main body. The sound pressure is measured in accordance with Eurovent 6/C/006-97 specification.

Multi Split System

R32



INTERNET CONTROL: Optional, IF DESIGN AWARD 2017: Ethera White awarded with the prestigious IF Design Award 2017.



## Ethera Multi Split Inverter+ • R32 GAS

Tentative data

|                             |                     |                 |                    | Day & Night        |                    |                    |
|-----------------------------|---------------------|-----------------|--------------------|--------------------|--------------------|--------------------|
| Rooms                       | 2 Rooms             |                 |                    | 3 Rooms            |                    |                    |
| Kit Silver                  | KIT-2XZ2525-TBE     | KIT-2XZ2035-TBE | KIT-2XZ2535-TBE    | KIT-3XZ202035-TBE  | KIT-3XZ252535-TBE  |                    |
| Indoor unit Silver          | CS-XZ25TKEW         | CS-XZ35TKEW     | CS-XZ35TKEW        | CS-XZ35TKEW        | CS-XZ35TKEW        |                    |
|                             | CS-XZ25TKEW         | CS-XZ20TKEW     | CS-XZ25TKEW        | CS-XZ20TKEW        | CS-XZ25TKEW        |                    |
| Kit Pure White Matt         | KIT-2Z2525-TBE      | KIT-2Z2035-TBE  | KIT-2Z2535-TBE     | KIT-3Z202035-TBE   | KIT-3Z252535-TBE   |                    |
| Indoor unit Pure White Matt | CS-Z25TKEW          | CS-Z35TKEW      | CS-Z35TKEW         | CS-Z35TKEW         | CS-Z35TKEW         |                    |
|                             | CS-Z25TKEW          | CS-Z20TKEW      | CS-Z25TKEW         | CS-Z20TKEW         | CS-Z25TKEW         |                    |
| Outdoor unit                | CU-2Z41TBE          | CU-2Z41TBE      | CU-2Z41TBE         | CU-3Z52TBE         | CU-3Z52TBE         |                    |
| Cooling capacity            | Nominal (Min - Max) | kW              | 2,50 [1,10 - 3,50] | 4,10 [1,50 - 5,20] | 4,10 [1,50 - 5,20] | 5,20 [1,80 - 7,30] |
| EER                         |                     | W/W             | 3,73 A             | 4,56 A             | 4,56 A             | 4,48 A             |
| SEER                        |                     | W/W             |                    |                    |                    |                    |
| Heating capacity            | Nominal (Min - Max) | kW              | 3,60 [0,70 - 5,50] | 4,60 [1,10 - 7,00] | 4,60 [1,10 - 7,00] | 6,80 [1,60 - 8,30] |
| COP                         |                     | W/W             | 3,50 B             | 4,84 A             | 4,84 A             | 4,79 A             |
| SCOP                        |                     | W/W             |                    |                    |                    |                    |
| Indoor dimension            | (HxWxD)             | mm              | 295 x 919 x 194    | 295 x 919 x 194    | 295 x 919 x 194    | 295 x 919 x 194    |
| Indoor net weight           |                     | kg              | 10                 | 10 (9 for Z20)     | 10                 | 10 (9 for Z20)     |
| Kit Silver Price            |                     | €               |                    |                    |                    |                    |
| Kit Pure White Matt Price   |                     | €               |                    |                    |                    |                    |

|                             |                     |                 |                    | Simultaneous       |                    |                     |
|-----------------------------|---------------------|-----------------|--------------------|--------------------|--------------------|---------------------|
| Rooms                       | 2 Rooms             |                 |                    | 3 Rooms            |                    |                     |
| Kit Silver                  | KIT-2XZ2525-TKE     | KIT-2XZ2035-TKE | KIT-2XZ2535-TKE    | KIT-3XZ202035-TKE  | KIT-3XZ252535-TKE  |                     |
| Indoor unit Silver          | CS-XZ25TKEW         | CS-XZ35TKEW     | CS-XZ35TKEW        | CS-XZ35TKEW        | CS-XZ35TKEW        |                     |
|                             | CS-XZ25TKEW         | CS-XZ20TKEW     | CS-XZ25TKEW        | CS-XZ20TKEW        | CS-XZ25TKEW        |                     |
| Kit Pure White Matt         | KIT-2Z2525-TKE      | KIT-2Z2035-TKE  | KIT-2Z2535-TKE     | KIT-3Z202035-TKE   | KIT-3Z252535-TKE   |                     |
| Indoor unit Pure White Matt | CS-Z25TKEW          | CS-Z35TKEW      | CS-Z35TKEW         | CS-Z35TKEW         | CS-Z35TKEW         |                     |
|                             | CS-Z25TKEW          | CS-Z20TKEW      | CS-Z25TKEW         | CS-Z20TKEW         | CS-Z25TKEW         |                     |
| Outdoor unit                | CU-2Z50TBE          | CU-2Z50TBE      | CU-2Z50TBE         | CU-3Z68TBE         | CU-3Z68TBE         |                     |
| Cooling capacity            | Nominal (Min - Max) | kW              | 5,00 [1,50 - 5,40] | 5,00 [1,50 - 5,40] | 5,00 [1,50 - 5,40] | 6,80 [1,90 - 8,00]  |
| EER                         |                     | W/W             | 4,24 A             | 4,24 A             | 4,24 A             | 3,56 A              |
| SEER                        |                     | W/W             | 8,50 A+++          |                    |                    |                     |
| Heating capacity            | Nominal (Min - Max) | kW              | 5,60 [1,10 - 7,20] | 5,40 [1,10 - 7,20] | 5,40 [1,10 - 7,20] | 8,50 [3,30 - 10,40] |
| COP                         |                     | W/W             | 4,63 A             | 4,63 A             | 4,63 A             | 4,09 A              |
| SCOP                        |                     | W/W             | 4,60 A++           |                    |                    |                     |
| Indoor dimension            | (HxWxD)             | mm              | 295 x 919 x 194    | 295 x 919 x 194    | 295 x 919 x 194    | 295 x 919 x 194     |
| Indoor net weight           |                     | kg              | 10                 | 10 (9 for Z20)     | 10                 | 10 (9 for Z20)      |
| Kit Silver Price            |                     | €               |                    |                    |                    |                     |
| Kit Pure White Matt Price   |                     | €               |                    |                    |                    |                     |



Rating Conditions: Cooling Indoor 27°C DB / 19°C WB, Cooling Outdoor 35°C DB / 24°C WB, Heating Indoor 20°C DB, Heating Outdoor 7°C DB / 6°C WB. (DB: Dry Bulb; WB: Wet Bulb)  
 Specifications subject to change without notice. For detailed information about ErP, please visit our websites [www.aircon.panasonic.eu](http://www.aircon.panasonic.eu) or [www.gtc.panasonic.eu](http://www.gtc.panasonic.eu).

**New CZ-TACG1 Panasonic Wifi kit: Control your comfort and efficiency with the lowest energy consumption**

Control your air conditioning with the smart internet control device via smartphones, tablet and smart desktop phone via internet. Offering even more functions as if you were at home or office: start/stop, mode operation, set temperature, room temperature, weekly timer, etc as well as the new, advanced functionality provided by Internet Control to achieve the best comfort and efficiency with the lowest energy consumption.

Available in 19 European languages: Bulgarian, Croatian, Czech, Danish, Deutsch, English, Estonian, Finnish, Francais, Greek, Hungarian, Italiano, Norwegian, Polish, Portuguese, Slovenian, Spanish, Swedish and Turkish.



NEW 18



**Easy connectivity**









CN-CNT easy to access. Previous Etherea indoor unit had to be dismantle to reach connector.

- Can easier connect:**
- Wifi accessory
  - KNX
  - Modbus
  - New CZ-CAPRA1 to integrate to PACi control

**Accessories**

| Accessories Interfaces  | Price € |
|---|---------|
|  <p><b>CZ-TACG1</b> <b>NEW</b> Panasonic Wifi kit for internet control</p>           |         |
|  <p><b>CZ-CAPRA1</b> Domestic with CZ-CNT port integration to PACi and ECOi</p>      |         |
|  <p><b>PAW-IR-WIFI-1</b> Interface (Etherea, 4 Way 60x60 Cassette and Hide Away)</p> |         |
|  <p><b>PAW-AC-KNX-1i</b> KNX interface for TKE and UKE models</p>                    |         |
|  <p><b>PAW-AC-MBS-1</b> Modbus interface for TKE and UKE models</p>                  |         |
|  <p><b>PAW-AC-ENO-1i</b> EnOcean interface for TKE and UKE models</p>                |         |
|  <p><b>PAW-AC-BAC-1</b> BacNet interface for TKE and UKE models</p>                  |         |

|   |  |
|---|--|
|  <p><b>PAW-AC-DIO</b> PCB for wall mounted with dry contacts, On/Off, Error message [all QKE and RKE wall mounted]</p> |  |
|  <p><b>PAW-AC-HEAT-1</b> Heating only PCB for Etherea, 4 Way 60x60 Cassette and Hide Away</p>                          |  |
|  <p><b>PAW-SMSCONTROL</b> Control of the Etherea, Flagship and Heatcharge by SMS (need additional SIM card)</p>        |  |
| <b>Individual Controls</b> <span style="float: right;"><b>Price €</b></span>  |  |
|  <p><b>CZ-RD514C</b> Wired remote controller for wall type</p>   |  |
|  <p><b>CZ-RD52CP</b> Wired remote controller for Floor Console and Cassette</p>  |  |
| <b>Panel</b> <span style="float: right;"><b>Price €</b></span>  |  |
|  <p><b>CZ-BT20EW</b> <b>NEW</b> RAL9010 panel for 4 Way 60x60 Cassette</p>   |  |